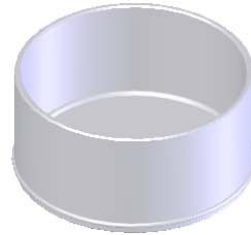
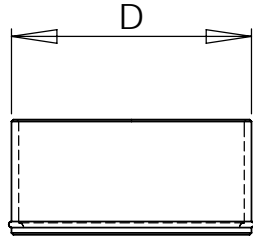


# Chicago Plastic Systems End Plug

A capped section of duct used to plug a coupling.



Dimensions		
Duct Size	D (od)	Wall Thickness
6	6.625"	0.1875"
7	7.375"	0.1875"
8	8.625"	0.1875"
9	9.375"	0.1875"
10	10.75"	0.1875"
11	11.375"	0.1875"
12	12.75"	0.1875"
14	14"	0.1875"
16	16"	0.1875"
18	18"	0.1875"
20	20"	0.220"
24	24"	0.250"

PVC Classes 12454-B&C per ASTM D-1784-92  
(Formerly known as Type I, Grades 1&2)